



**THE POWER  
OF HERITAGE**

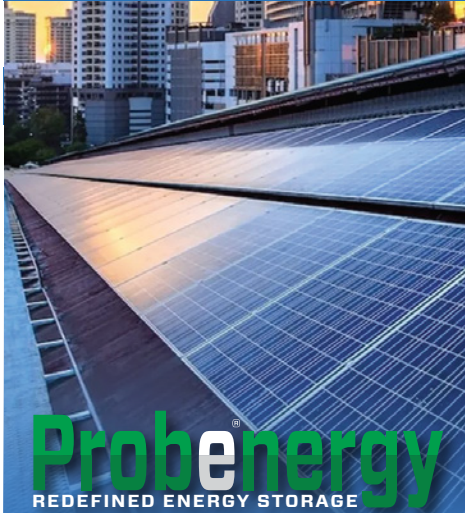


**COMPANY PROFILE**

**AUTOMOTIVE**



**ALTERNATIVE ENERGY**



**MINING**



**SERVICE » QUALITY » AVAILABILITY » PARTNER WITH US**

+27 (0) 11 453 0924 | +27 (0) 86 111 3507  
probe@probegroup.co.za | [www.probegroup.co.za](http://www.probegroup.co.za)

**GET IN TOUCH**



## *The power of heritage*

Probe, established in 1963 by Francesco Rovelli, has developed into a diversified group powering the automotive, mining, alternative energy and industrial sectors in Southern Africa.

Probe Industrial Technologies, Probenergy and Probe Integrated Mining Technologies (IMT) are specialised divisions of the integrated group. We supply and provide aftermarket support for leading global brands and our Probe ranges, including Probe batteries and Probenergy power solutions.

Building on Probe's proud heritage and established networks is a strategic vision to strengthen the company's competitive advantage through continued diversification of our product range as a trusted supplier of world class power and energy solutions.

## *Knowledge capital*

Frank Rovelli leads with the support of the Probe management, sales and technical team, who embraces evolving products and technologies, navigating the ever-changing business and political environment to consistently bring fresh solutions to the market in each of the sectors in which we operate.

We constantly strive to embrace and understand new technologies, providing our partners with the necessary focus and expertise to develop relevant products in a dynamic environment.



## **SECTOR FOCUS**

### **AUTOMOTIVE**

Known for supplying the Complete Power Package with a focus on batteries, starters and alternators, Probe imports world-class batteries and branded auto-electrical components. We represent major OEM brands including Borg Warner (Delco Remy), Prestolite (Leece-Neville), CE Niehoff and Horton.

We remain a leading importer and distributor of the latest battery technologies in the Southern African region.

### **ALTERNATIVE ENERGY**

Probe has expanded into alternative energy technologies, including lithium, solid-state and supercapacitor batteries, offering the range and expertise that both business and domestic users need to revolutionise their energy sources.

Probenenergy offers high quality yet affordable power solutions for a wide range of applications, including solar, back-up solutions, UPS, industrial, marine, and telecommunications. The range further includes inverters, solar kits and next generation battery chargers and boosters.

Probe represents international manufacturing plants, ensuring we import varied best-of-breed technologies to cater for different market needs.

### **MINING**

Our primary focus in the mining segment is the provision of Safety and Productivity solutions. We provide the latest technology Collision Avoidance Products and electric motors.

Probe is a proud Third Party Partner to General Electric. Probe supplies M3sh Gas and Dust detection products, as well OEM standard mining-compliant harnesses. We supply auto-electrical products and services and complete battery solutions for mining, from lead acid (cranking, traction and storage), AGM/Gel and lithium batteries to supercapacitors.

Digital Analytics is an emerging focus, with the ultimate objective of consolidating productivity and safety products on one platform to add integrated value to the market.

## **PARTNERSHIPS**

At Probe, we take pride in the strong relationships we have with all our stakeholders, and our ability to execute transactions that make commercial sense and are ethically and environmentally compliant. We believe the current commercial environment in Southern Africa is about "Partnerships", and Probe is ideally positioned to make its mark in the respective segments in the next decade.

## **PRESENCE ACROSS SOUTHERN AFRICA**

Probe has 15 operational branches throughout Southern Africa, including in South Africa, Namibia, Mozambique, Botswana and Mauritius. We further have distributor arrangements with trusted partners in Zimbabwe and Zambia.

## **PROBE BLACK ECONOMIC EMPOWERMENT (BEE) SHAREHOLDING**

Probe's BEE status meets the requirement of the South African BEE laws and we are EEA (Employment Equity) compliant. We are proud to be associated with Thesele Holdings, a reputable Private Equity Company ([www.thesele.co.za](http://www.thesele.co.za)) that holds a 49.95% share in Probe Group Holdings. Probe remains committed to transformation in South Africa.



Frank Rovelli

*"Understanding the product and the vision is the path to creating a limitless environment and achieving the desired outcome for all stakeholders. There shouldn't be a cap to what one wants to achieve, while always remaining fair, unbiased and committed!"*

**Frank Rovelli, Probe Group CEO**



# Automotive Division

**Probe**  
SINCE **1963**  
CORPORATION

QUALITY & SERVICE

AVAILABILITY

TECHNICAL EXPERTISE



*"Probe is committed to providing exceptional service and quality, availability and technical expertise for every need." Coenie Brickhill, Chief Operating Officer*

## Probe Batteries

Our premium, maintenance-free, 'fit and forget' battery is a TRULY sealed battery, with both plates in lead laminated and expanded calcium/calcium technology. It does not require service or the addition of water during its operating life.

The Probe heavy duty battery range is designed for use in special applications, and rugged environments. The technology ensures that the battery is resistant to road vibrations and extreme temperatures, making it the logical choice for South African conditions.

Probe offers a complete range of multipurpose and deep cycle batteries for all commercial and industrial applications, including marine, camping, uninterrupted power supplies (UPS), back-up power, solar, and for telecommunication stations and energy lighting. This series includes lead calcium "wet plate type", tubular, AGM, GEL and Lithium Iron Phosphate technologies that cater for various deep cycle applications.

Probe further offers the latest battery technologies for evolving solar applications, including batteries and inverters, for both domestic and industrial markets.



# MaxLi<sup>+</sup>

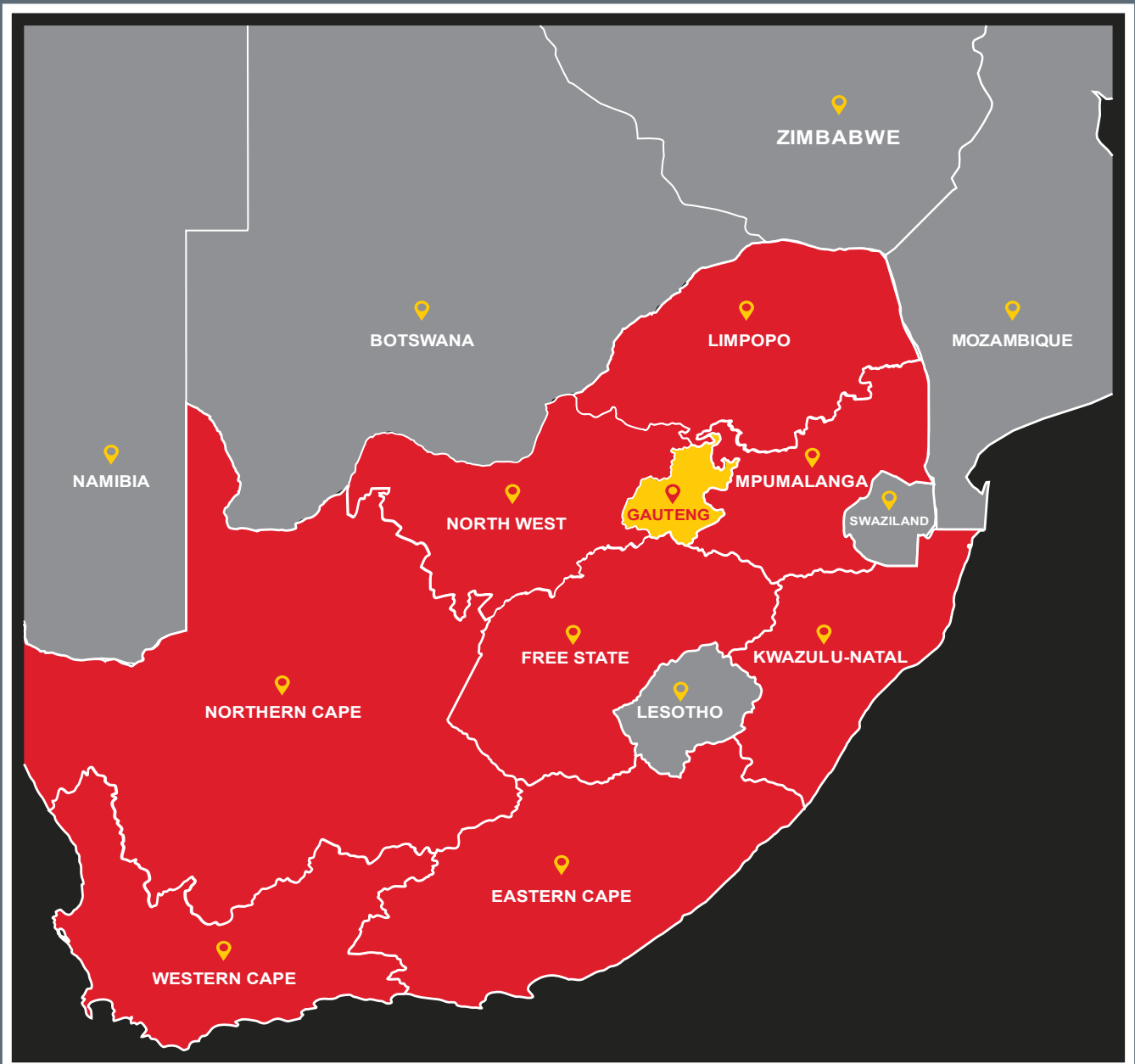
DISCOVER  
THE FULL RANGE  
OF Intelligent / Smart  
MAXLI boosters &  
chargers



## National Branch Network

Probe offers comprehensive aftermarket support via a nationwide footprint, including full workshop facilities for electrical repairs, technical sales support and training, and assistance with preventative maintenance programs.

Our national footprint is important for accessibility and service, offering same-day delivery from our branches, with deliveries twice a day in main centres.



[www.probegroup.co.za](http://www.probegroup.co.za)  
[www.probebattery.co.za](http://www.probebattery.co.za)  
[www.probeindustrial.co.za](http://www.probeindustrial.co.za)  
[www.probeimt.co.za](http://www.probeimt.co.za)

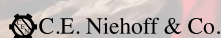


## Mining Division

Probe Mining Holdings delivers products and solutions that improve safety and productivity in the mining and construction industry, ultimately reducing the total cost of ownership for our customers. Probe Mining Holdings represents General Electric, CAT and other international brands in the supply of specialised Collision Avoidance Systems (CAS) for mining equipment, as well as engineering specialised lock out safety switches, to ensure mining equipment is intrinsically safe from an electrical point of view.

Probe Mining Holdings was established through a process of consolidating the mining orientated businesses within the Probe Group. These entities have flourished with a long and proud relationship within the mining industry as the premium provider of auto-electrical parts and services. The Probe Mining Holdings footprint continues to grow from its initial three operations in Witbank (established in 1969), Kuruman (established in 1993) and Rustenburg (established in 2005), to include operations in Limpopo (Steelpoort and Musina), Zambia, Namibia (Windhoek) and Mozambique (Tete).

Probe Mining Holdings is committed to building and maintaining strategic partnerships with our clients, which are made possible through an extensive strategically based network located near mining operations. In addition to this, we endeavour to support our clients by maintaining on-site stock and technical support.



# Integrated Solutions for Productivity and Safety

CAS &  
Safety Systems

Batteries

Harnesses

QUALITY & SERVICE

Integrated Solutions for  
Productivity and Safety

AVAILABILITY

TECHNICAL EXPERTISE

Alternators

Starters



Probe Mining Holdings distributes a full range of auto-electrical components including batteries, alternators, starters, and associated spares for American, European, and Asian vehicles. A wide dealer network supports full national distribution of all products.

Probe Mining Holdings comprehensive range of starters and alternators have wide applications for a variety of vehicle types used in the automotive, trucking, and agricultural sectors, to mining and construction equipment industries.

We are a licensed distributor of top international brands such as Delco Remy, Prestolite/Leece Neville and Horton, and in addition, suppliers to other well-known and leading brands such as Bosch & CE Niehoff. Our expanding product range includes engine cooling fans and viscous fan clutches from Horton, lamps, and work lights, such as Vision X, a global leader in industrial lighting.



Gert J. Roselt

**“Teamwork Makes the Dream Work”**  
Gert J. Roselt, Probe IMT CEO

# Probenergy<sup>®</sup>

REDEFINED ENERGY STORAGE



## ALTERNATIVE ENERGY

TIMELESS INNOVATION | CUTTING EDGE INSIGHTS

Probenergy, a focused new division of Probe Group, offers a dynamic selection of carefully sourced energy-relevant products from top global brands, as well as Probenergy's own product range, and is perfectly aligned with our mission to make world class energy solutions accessible in Southern Africa.

There is a huge need in the market for high quality yet affordable energy solutions for solar applications, particularly Lithium Iron Phosphate, Super Capacitor and Solid State Batteries, which have historically been very expensive. We're focused on offering the range, expertise and advice that business and domestic users need to revolutionise their energy sources.

The Probenergy range of Inverters, Lithium Iron Phosphate-, Super Capacitor- and Solid State Batteries, Solar Kits, and Probe's range of GEL and AGM batteries are widely used on deep cycle and solar applications, offering reliable and sustainable Energy Solutions during periods of untimely power outages. It is also possible to manufacture any configuration for specific needs, making these products ideal for small home usage through to offices and small businesses.

Probenergy further offers power solutions for a wide range of applications, including Solar and Back-up, UPS, Industrial, Marine, Telecommunications, Heavy and Light Duty Automotive and Electrical Vehicle charging.





**THE POWER**  
**OF HERITAGE**



[www.probegroup.co.za](http://www.probegroup.co.za)

For more details on various branches, please visit:

### HEAD OFFICE

31D Lake Road, Longmeadow Business Estate, Edenvale 1616, Johannesburg, South Africa

Tel: +27 (0) 11 453 0924 or +27 (0) 86 111 3507

Email: [probe@probegroup.co.za](mailto:probe@probegroup.co.za)

#### GAUTENG HEAD OFFICE

Johannesburg

Tel: +27 (0) 11 453 0924

#### WESTERN CAPE

Cape Town

Tel: +27 (0) 21 981 9287

Tel: +27 (0) 82 372 9079

#### EASTERN CAPE

Port Elizabeth

Tel: +27 (0) 41 374 4343

Tel: +27 (0) 76 086 1771

#### NORTHERN CAPE

Kuruman

Tel: +27 (0) 53 712 2331

#### NORTHERN CAPE

Kathu

Cell: +27 (0) 83 259 9163

#### MPUMALANGA

Witbank

Tel: +27 (0) 13 692 4161

Cell: +27 (0) 82 461 2239

#### LIMPOPO

Steelpoort

Tel: +27 (0) 13 230 4008

Cell: +27 (0) 79 897 4091

#### KWAZULU NATAL

Durban

Tel: +27 (0) 31 705 6050

Tel: +27 (0) 79 595 4697

#### NAMIBIA

Windhoek

Tel: +264 (0) 61 401 170

#### BOTSWANA

Gabarone

Tel: +276 (0) 7293 7878

**SERVICE » QUALITY » AVAILABILITY » PARTNER WITH US**

+27 (0) 11 453 0924 | +27 (0) 86 111 3507  
[probe@probegroup.co.za](mailto:probe@probegroup.co.za) | [www.probegroup.co.za](http://www.probegroup.co.za)

**GET IN TOUCH**

