



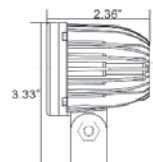
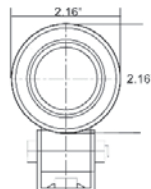
SOLSTICE SOLO PRIME SALES SHEET

SOLSTICE SOLO PRIME 2" LED POD

Compact 10-Watt LED for Universal Applications



Solstice Prime Series
The Solstice Solo Prime is designed as universal lighting with high light output from a compact housing.



XIL-SP120 Shown

PART # 10° BEAM	XIL-SP110	XIL-SP110W
STOCK CODE	4008830	4008847
PART # 20° BEAM	XIL-SP120	XIL-OSP120W
STOCK CODE	4009882	4008854
PART # 40° BEAM	XIL-SP140	XIL-SP140W
STOCK CODE	4009899	4008861

KEY FACTS

Compact 2" Round
The Solo Prime packs a 10 Watt LED into a 2" round to produce a large output from a small housing. The Solo is designed for use in almost any application.

Prime Drive Technology
With Prime Drive, Electronic Thermal Management maintains a safe operating temperature for the light without sacrificing output.

High Output
One Solo pod produces 602 effective lumens of light, or as much as a halogen car headlight, yet all from a 2" housing.

Dimming Capability
Pulse Width Modulation circuitry flashes the LED faster than the human eye can see to achieve dimming capability.

Features

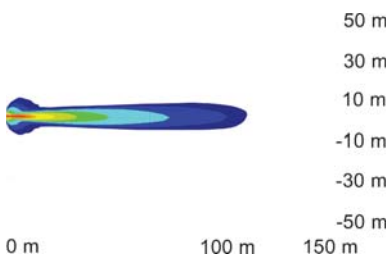
- Integrated Electronic Thermal Management
- Next Gen LED is Drive to 90% Efficiency
- Radial Fins Optimize Heat Dissipation
- Less than 1 Amp Power Consumption
- PWM Integrated Dimming Circuitry
- Die-Cast 6061 Aluminum Housing
- Polycarbonate Lens
- Patent #336509

Technical Information

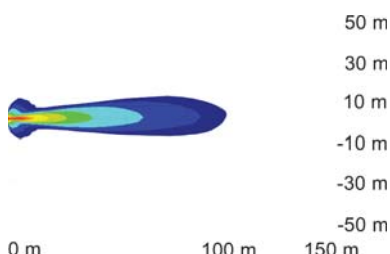
WARRANTY	Extended
RAW LUMENS	860 lm
EFFECTIVE LUMENS	602 lm
WATTAGE	10
WEIGHT	0.70 lb/0.32 kg
LED LIFESPAN	50,000 Hours
DIMENSIONS	2.16" x 3.33" x 2.36" 55 mm x 84.5 mm x 60 mm
INPUT VOLTAGE	9-48V DC
AMP DRAW (12V)	0.83A
IP RATING	IP-68
VIBRATION RATING	8.6 G _{rms}
OPERATING TEMP	-40 Celsius ~ +80 Celsius



10° Narrow Beam



20° Narrow Beam



40° Medium Beam

